

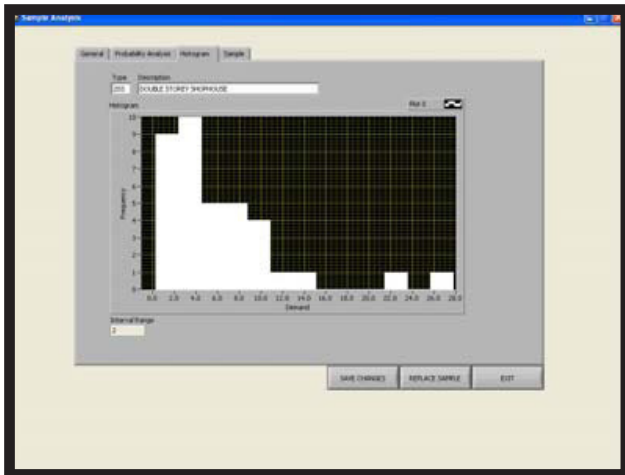
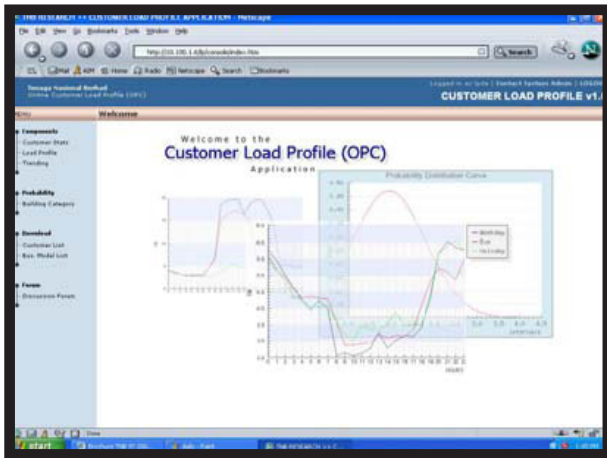


## R&D Fund Project

### Development of Customer Load Profile Database and Applications

#### Project Overview

The development of a customer load profile database and application system is intended for planning engineers to be able to effectively plan and forecast the demand requirements of TNB distribution network system. This Web based load profile system is available throughout TNB intranet and can be the source of information for development and operational planning. The Web base customer load profile database derives information from CIBS and is used in many network applications where demand (kW) is a major concern. The database application and data analysis software was built using web based application development tools.



#### Web based Load Profile System

#### Deliverables

A web based customer load profile database and related applications for network planning that can be used by TNB Distribution for development and operational planning.

#### Benefits

- Contribute towards better understanding of customer load profile at the individual level and group level for optimal dimensioning of distribution system.
- Established centralized load profile database.
- Valuable input to the development of DSM, load management, and asset optimization strategies.