



## R&D Fund Project

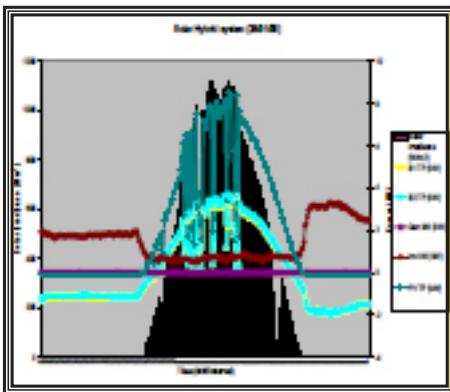
### Reliability And Performance Analysis Of Stand Alone Photovoltaic System

#### Project Overview

The Stand Alone Photovoltaic System at Kg. Denai, Rompin is installed with a performance monitoring system to enable analysis of the system's performance and measure of reliability. The performance monitoring system is capable of retrieving data from the solar hybrid station (Kg. Denai) to the main office (TNBR). The two stations are located approximately 350 kilometers from one another. Short Messaging System (SMS) technique is used to transfer data from the station to the main office. The communication system also has the capability to notify end user should there be any malfunctions and failures.



Stand Alone Photovoltaic System



Performance Monitoring System

#### Deliverables

- A remote performance monitoring system for Solar Hybrid System.
- Allows early detection of any abnormalities and thus reduce system outage and increase reliability.

#### Benefits

The overall monitoring system enables TNBD Rompin to take prompt action should there be any abnormalities of the solar hybrid system. This reduces the time for the system to be rectified and therefore increase the system reliability.