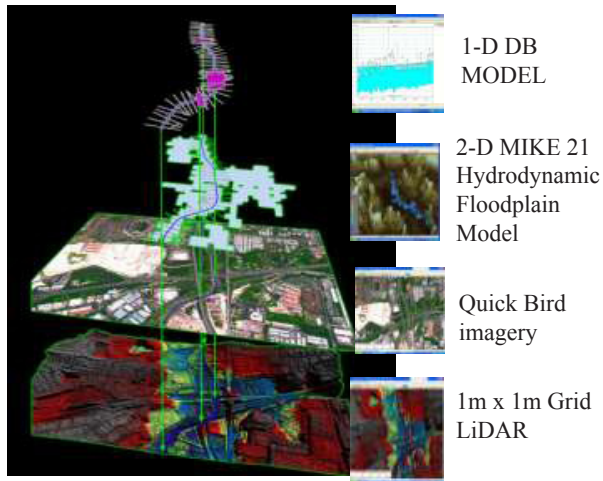


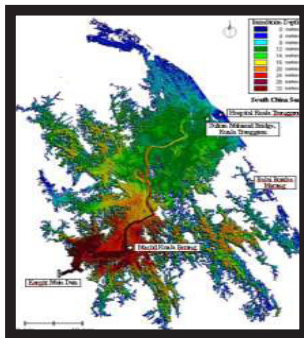


R&D Fund Project

Dam Break Study and Social, Economics and Environmental Impacts Assessment at Kenyir Power Station



Development of Dam Break Modeling



Inundation Map

Project Overview

Huge volume of water stored in the reservoir behind the dam could pose catastrophic damages to the downstream area under unwanted dam break event. A dam break study is needed to determine the possibility of dam break occurrence and determination of the discharge due to dam break. This would allow preparation of inundation maps containing information

on flood depths, flood arrival time and flood velocity which are crucial to formulate emergency action plan. Impact assessments in terms of social, economic and environmental are quantified based on delineation of affected areas thus identification of the shelter area and evacuation points.

Deliverables

- Establish breach mechanism
- To design Flood Routing Model
- Inundation Maps for all scenarios that are simulated.
- Emergency Action Plan
- Quantification of the impact downstream (socio-economic & environmental)

Benefits

- Ability of the station to respond effectively and immediately in event of a disaster
- Evaluation of the impact to areas which would be inundated.
- Assist the local authorities in the formulation of warning and evacuation procedures of the EAP.
- Evaluation of the socio-economic and environmental impact downstream of the dam Ability of the station to respond effectively and immediately in event of a disaster
- Evaluation of the impact to areas which would be inundated.
- Assist the local authorities in the formulation of warning and evacuation procedures of the EAP.
- Evaluation of the socio-economic and environmental impact downstream of the dam