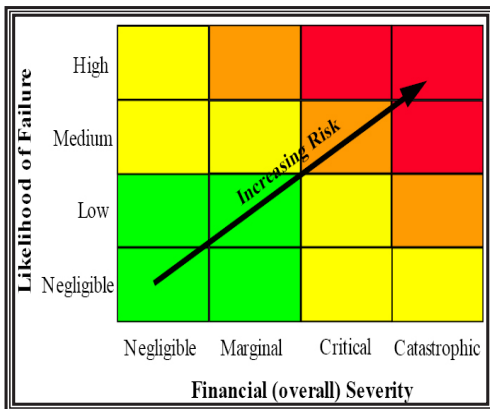


## R&D Fund Project

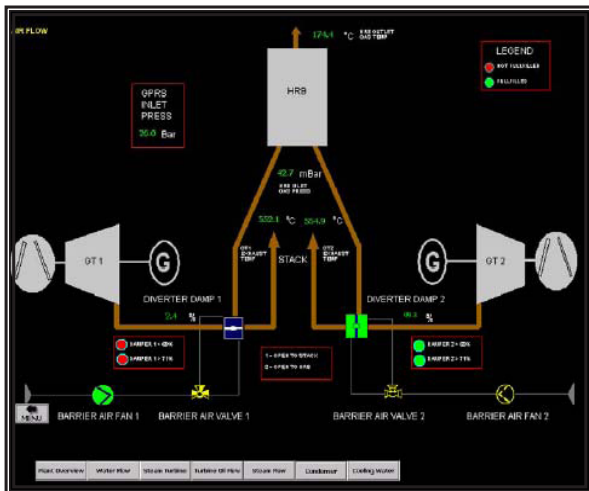
### Development & Implementation Of An Asset Optimization Program For SESB Power Plants



Risk Matrix for Risk Based Maintenance

### Project Overview

TNBR implemented an Asset Optimization Program at two SESB power plants: Patau-Patau Power Station, Labuan, and Tenom Pangi Hydro Station, by introducing a Risk Based Maintenance (RBM) strategy followed by monitoring techniques incorporating online condition monitoring and centralized plant information system. The Asset Optimization Program implemented in this project supported some of SESB's T7 initiatives. This was achieved through the plant condition and performance monitoring, maintenance resource planning, and risk based maintenance.



Screenshot of Condition Monitoring System

### Deliverables

- RBM Analysis - inventory of plant component, risk assessment of plant components, review of historical data, identification of degradation mechanism, RBMS. Power software.
- Condition Monitoring System Development and Implementation - data interfacing and retrieval review, detailed conceptual system design, system hardware and software design.
- Centralized Online Plant Information System - system hardware and software interfacing, web based access module integration

### Benefits

- Establishment of baseline data that can be used for extension of inspection interval at a later stage
- System integration of various architecture and complexity
- Improved information flow and dissemination of information regarding power plant performance